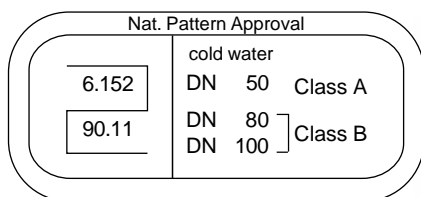


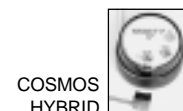
Compound Water Meter COSMOS WPVD 3=1

DN 50
DN 80
DN 100

for cold water up to 50 °C



**Main- and Bypass meter
prepared for
electronic registers**



Application

- Measuring of smallest flow rates
- For large flow ranges
- Measuring of cold water up to 50 °C
- For working pressure up to 16 bar

Special features

- Three-in-one measuring element 3=1 main meter, spring loaded valve and bypass meter form an integrated unit
- Interchangeable measuring unit 3=1
- Low weight
- Hermetically sealed register (IP 68)
- Register may be rotated through 360°
- Maximum corrosion protection by powder coating
- Stainless steel screws
- For bypass meter all approved domestic water meters can be used

Installation

Pipe	horizontal	_____
Meter head	upwards	↑

Installation Requirements

Unrestricted straight pipe in front of the meter 3 x DN.
No requirements behind the meter.

Options

- Main meter and bypass meter may be equipped with several electronic registers (see leaflet 3910 e to 3930 e)
- Main and bypass meter with pulsers
- Overall length acc. to DIN with spool piece



Quality Management System
DQS-certified according to DIN ISO 9001,
Reg.-No. 2173-02

Laboratory Accreditation according to DIN EN 45001
DAR Registration No. LED-P-08.001



MEINECKE
An Invensys company

ML 3701 e

Technical Data

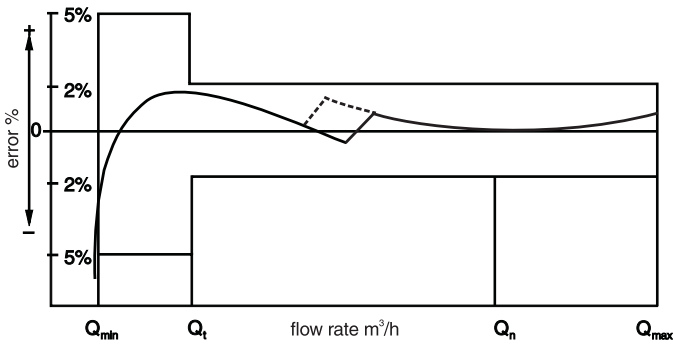
Performance Table

Size of meter	DN	mm	50	80	100
Working pressure	PN	bar	16	16	16
Maximum peak flow (few minutes)	Q_{max}	m^3/h	80	200	250
Continuous flow	Q_n	m^3/h	40	120	180
Bypass meter	Q_n	m^3/h	2.5	2.5	6
Transitional flow $\pm 2\%$	Q_t	m^3/h	0.0375	0.0375	0.090
Change over with increasing flow		m^3/h	2.3	2.3	3.9
decreasing flow		m^3/h	1.2	1.4	2.3
Lower measuring limit $\pm 5\%$	Q_{min}	m^3/h	0.02	0.02	0.025

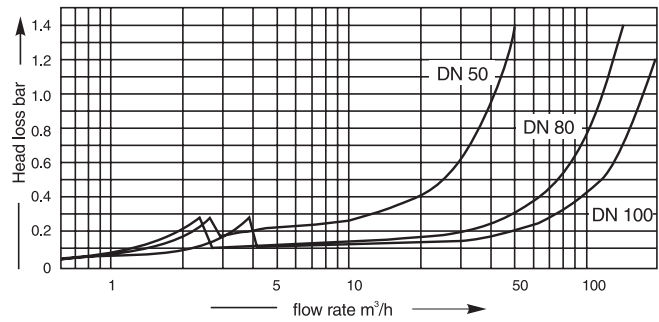
Pulse Values

Main meter	REED RD 01	0.1 m ³ and 1 m ³
	OPTO OD 01	0.001 m ³
	OPTO OD 03	0.01 m ³
Bypass meter	Reed	0.001 m ³ ; 0.01 m ³ ; 0.1 m ³ or 1 m ³

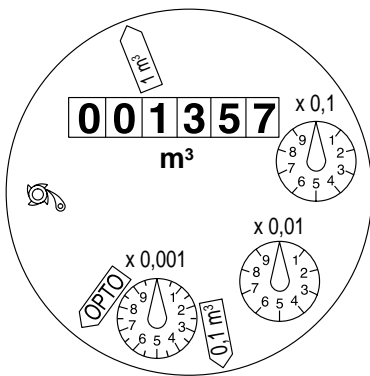
Typical Accuracy Curve



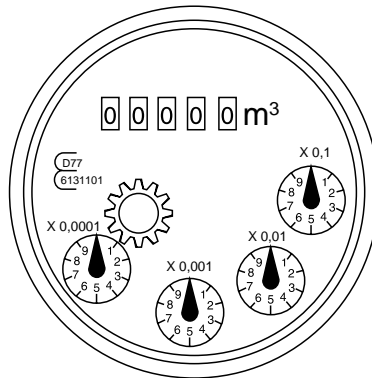
Typical Head Loss Curve



Dials



Main meter



Bypass meter
(Type MN QN ... XN.EBH)

Dimensions and Weights

Size of meter	DN	mm	50	80	100
Overall length	L1	mm	270	300	360
Bypass meter	Qn		2.5	2.5	6
Height	H	mm	190	220	205
	h	mm	75	95	105
	g	mm	330	410	410
Length	L2	mm	330±40	400±60	440±60
	L	mm	600±40	700±60	800±60
Width	B	mm app.	178	193	212
	b	mm app.	83	106	124
Weight	meter	kg	22.5	32.5	39
	meas. element	kg	11.5	13.5	17.0
	spool piece	kg	10.5	16.5	20.5

Materials

Body	main meter	cast iron
	bypass meter	brass
Measuring element (both meters)		plastic
Rotor (both meters)		plastic
Spring loaded valve		plastic and stainless steel

Bypass Meter

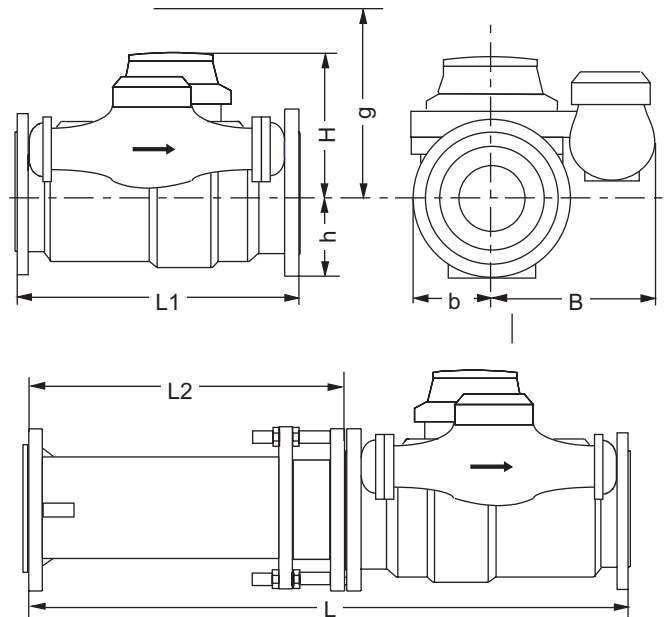
Standard Bypass Meter:

Multi Jet Meter wet dial

Options:

- Multi Jet Meter wet dial with pulser
- Multi Jet Meter dry dial with Encoder register
- Rotary Piston Meter with COSMOS Standard register
- Rotary Piston Meter with COSMOS Hybrid register
- Rotary Piston Meter with COSMOS Electronic register
- Rotary Piston Meter with COSMOS Encoder register
- Rotary Piston Meter SPX with Encoder register

Dimension Picture



Type: MN QN ... XN.EBH

- Type: MN QN ... XN.EBH K ...
- Type: MT QN 2.5 Encoder
- Type: RKD QN 2.5 Standard
- Type: RKD QN 2.5 Hybrid
- Type: RKD QN 2.5 Electronic
- Type: RKD QN 2.5 Encoder
- Type: RTP QN 2.5 Encoder



Standard Bypass Meter
MN QN ... XN.EBH



Rotary Piston Meter
RKD QN 2.5



MEINECKE

Available Designs

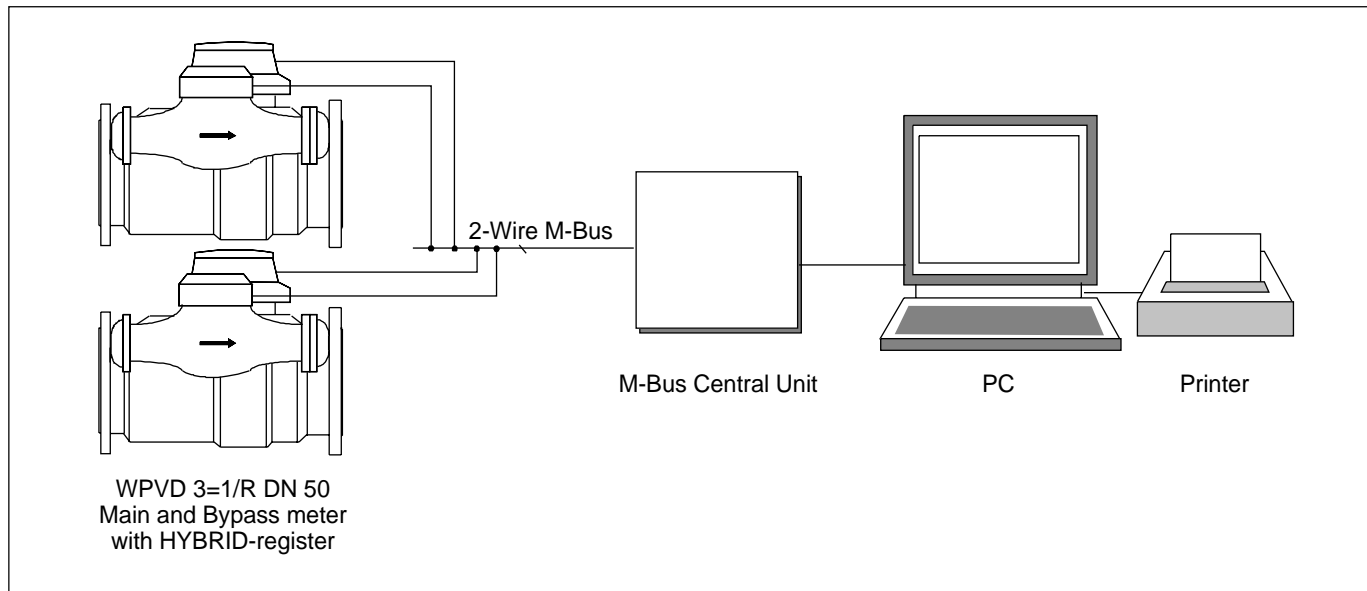
Size of meter	DN	50	80	100
Overall length	mm	270	300	360
Order no.				
Standard WPVD 3=1/R Bypass meter	right	829026	829027	829028
Optional WPVD 3=1/L Bypass meter	left	829032	829033	829034

Spool piece	DN	50	80	100
Overall length	mm	330±40	400±60	440±60
Order no.		828331	828333	828336

Order Example

specification	_____
type	_____
bypass meter right	_____
size of meter	_____
working temperature	_____
working pressure	_____
COSMOS WPVD 3=1/R DN 50 50/16	
according to DIN 2501 PN 16	_____
829026	_____
with spool piece	_____
DN 50	_____
828331	_____
flange drilling	_____
order no.	_____
accessories	
size	_____
order no.	_____

Application example for automatic meter reading



Subject to change without notice
11.00



MEINECKE
An Invensys company

H. Meinecke AG
Meineckestrasse
D-30880 Laatzen

Tel. +49 (0)5102 / 74-0
Fax +49 (0)5102 / 74-341
<http://www.meinecke.de>
E-mail: service@meinecke.de