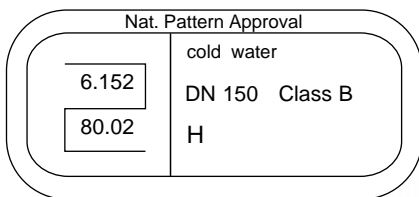
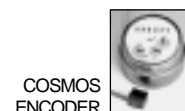
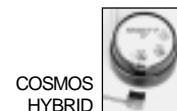


# Compound Water Meter COSMOS WPVD 150

for cold water up to 50 °C



Main- and Bypass meter prepared for electronic registers



## Application

- Measuring of smallest flow rates
- For large flow ranges
- Measuring of cold water up to 50 °C
- For working pressure up to 16 bar

## Special Features

- Compact spring loaded valve
- Main meter with removable measuring element
- Main meter with hydrodynamically balanced rotor
- Hermetically sealed registers (IP 68)
- Low weight
- Maximum corrosion protection by powder coating
- Stainless steel screws
- For bypass meter all approved domestic water meters can be used

## Installation

Pipe	horizontal	—————
Meter head	upward	↑

## Installation Requirements

- Unrestricted straight pipe in front of the meter 3 x DN.
- No requirements behind the meter.

## Options

- Main meter and bypass meter may be equipped with several electronic registers (see leaflet ML 3910 e - 3930 e)
- Main and bypass meter with pulsers
- Overall length acc. to DIN with spool piece



Quality Management System  
DQS-certified according to DIN ISO 9001,  
Reg.-No. 2173-02  
Laboratory Accreditation according to DIN EN 45001  
DAR Registration No. LED-P-08.001



**MEINECKE**  
An Invensys company

ML 3750 e

# Technical Data

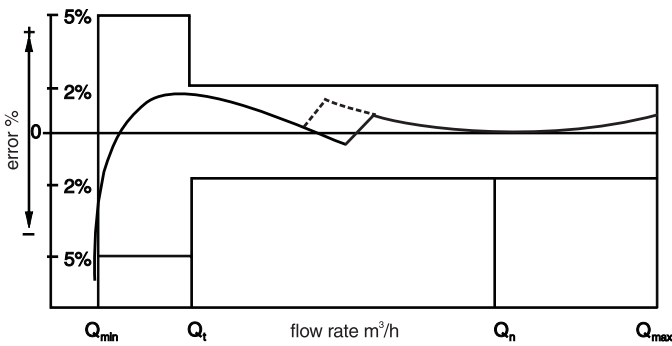
## Performance Table

<b>Size of meter</b>	<b>DN</b>	<b>mm</b>	<b>150</b>
Working pressure	PN	bar	16
Maximum peak flow (few minutes)	$Q_{max}$	$m^3/h$	600
Continuous flow	$Q_n$	$m^3/h$	400
Bypass meter	$Q_n$	$m^3/h$	10
Transitional flow $\pm 2\%$	$Q_t$	$m^3/h$	0.15
Change over with increasing flow		$m^3/h$	8.3
decreasing flow		$m^3/h$	4.7
Lower measuring limit $\pm 5\%$	$Q_{min}$	$m^3/h$	0.03

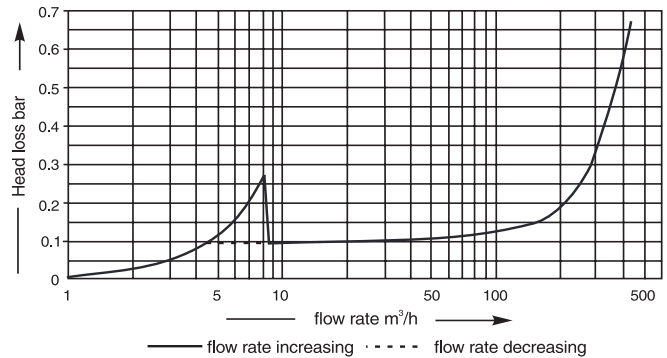
## Pulse Values

Main meter	Reed RD 01	1 m <sup>3</sup> and 10 m <sup>3</sup>
	Opto OD 01	0.01 m <sup>3</sup>
	Opto OD 03	0.1 m <sup>3</sup>
Bypass meter	Reed	0.01 m; 0.1 m <sup>3</sup> or 1 m <sup>3</sup>

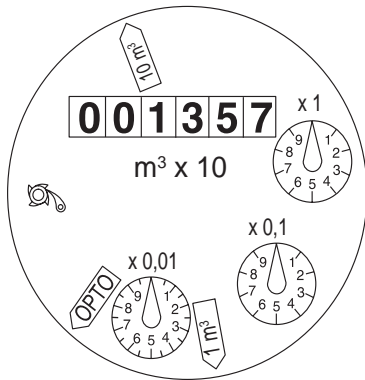
## Typical Accuracy Curve



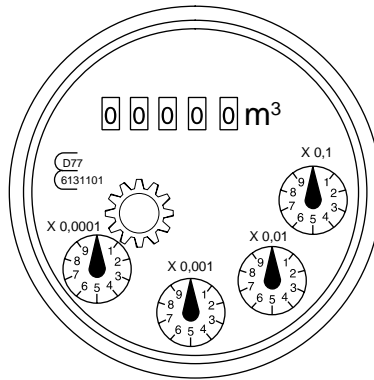
## Typical Head Loss Curve



## Dials



Main meter



Bypass meter  
(Type MN QN ... XN.EBH)

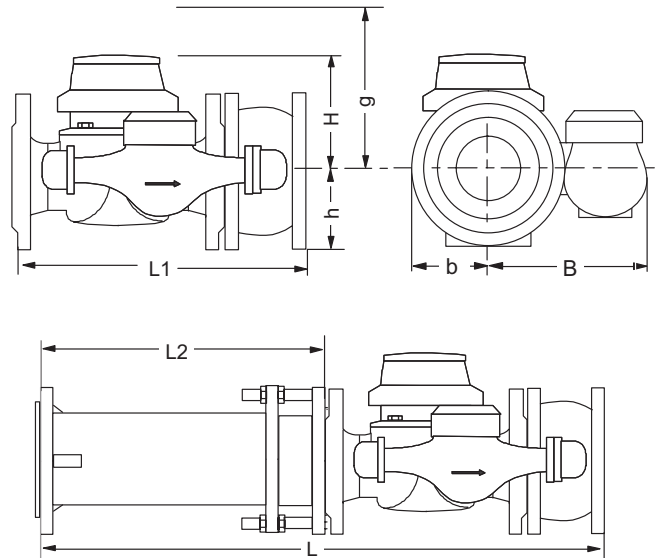
## Dimensions and Weights

Size of meter	DN	mm	150
Overall length	L1	mm	500
Bypass meter	Qn		10
Height	H	mm	177
	h	mm	135
	g	mm	356
Length	L2	mm	500±60
	L	mm	1000±60
Width	B	mm app.	275
	b	mm app.	145
Weight	meter	kg	60
	meas. element	kg	5,5
	spool piece	kg	32

## Materials

Body	main meter	cast iron
	bypass meter	brass
Measuring element (both meters)		plastic
Rotor (both meters)		plastic
Spring loaded valve		plastic and stainless steel

## Dimension Picture



## Bypass Meter

### Standard Bypass Meter:

Multi Jet Meter wet dial

### Options:

Multi Jet Meter wet dial with pulser  
 Rotary Piston Meter with COSMOS Standard register  
 Rotary Piston Meter with COSMOS Hybrid register  
 Rotary Piston Meter with COSMOS Electronic register  
 Rotary Piston Meter with COSMOS Encoder register

Type: MN QN 10 XN.EBH

Type: MN QN 10 XN.EBH K ...  
 Type: RKD QN 10 Standard  
 Type: RKD QN 10 Hybrid  
 Type: RKD QN 10 Electronic  
 Type: RKD QN 10 Encoder



Standard Bypass Meter  
 MN QN 10 XN.EBH



Rotary Piston Meter  
 RKD QN 10



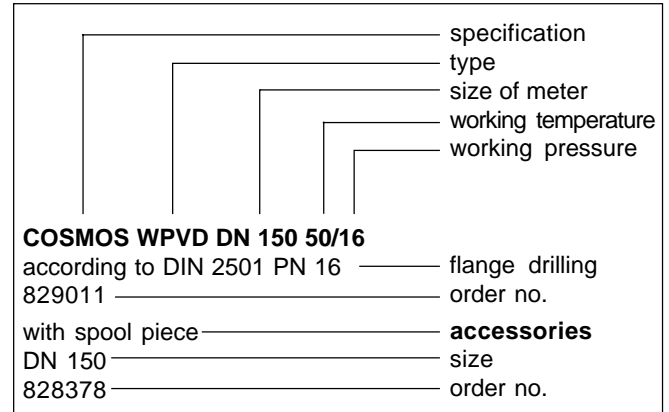
**MEINECKE**

## Available Designs

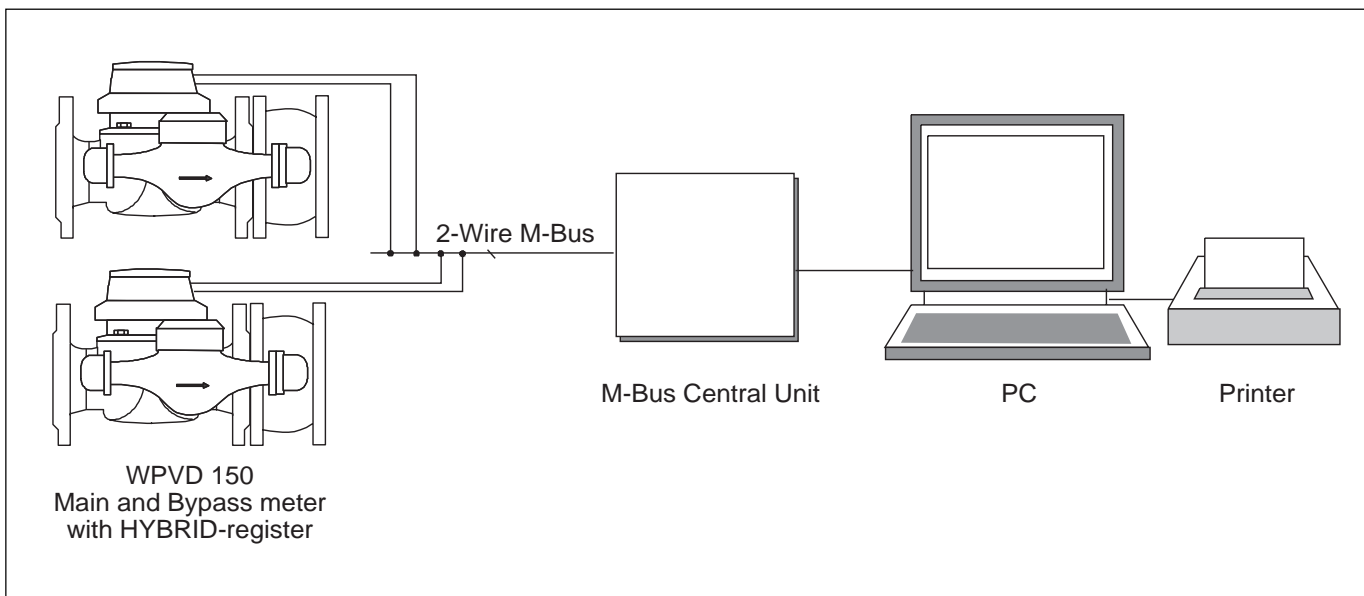
<b>COSMOS WPVD</b>	<b>DN</b>	<b>150</b>
Overall length	mm	500
Order no.		829011

<b>Spool piece</b>	<b>DN</b>	<b>150</b>
Overall length	mm	500±60
Order no.		828378

## Order Example



## Application example for automatic meter reading



*Subject to change without notice*  
11.00



**MEINECKE**  
An Invensys company

H. Meinecke AG  
Meineckestrasse  
D-30880 Laatzen

Tel. +49 (0)5102 / 74-0  
Fax +49 (0)5102 / 74-341  
<http://www.meinecke.de>  
E-mail: [service@meinecke.de](mailto:service@meinecke.de)